

REV	DESCRIPTION
-----	-------------

SPECIFICATIONS

1. Safe, ACF 2ds - 48 H x 24 W x 18 D, UL Listed TL-30, Factory Finish
2. Upper Chest, 26 H x 18 W x 18 D, (2) Adjustable Shelves.
3. Lower Chest, 14 H x 18 W x 18 D, with a 3 x 18 Deposit Chute, Diverted by a Hinged Anti-Fish Baffle
4. Upper Door, Clear Opening: 26 H x 18 W, Equipped with a UL Listed Key Change Combination Lock, Three (3) 1" Dia Chrome-Plated Lock Bolts Protected by a Drill-Resistant Hardplate
5. Lower Door, Clear Door: 14 H x 18 W, Equipped with a UL Listed Key Change Combination Lock, S&G 6870 High Security Auxiliary Lock, Three (3) 1" Chrome-Plated Lock Bolts Protected by a Drill-Resistant Hardplate
6. Approx Weight: 1660 lbs.

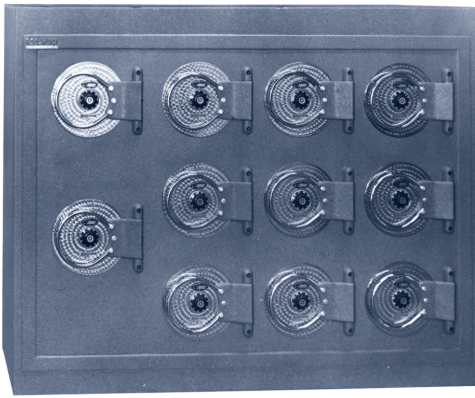
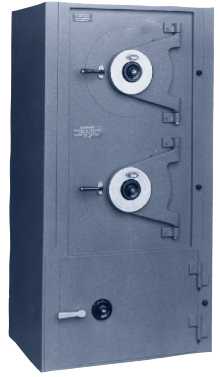
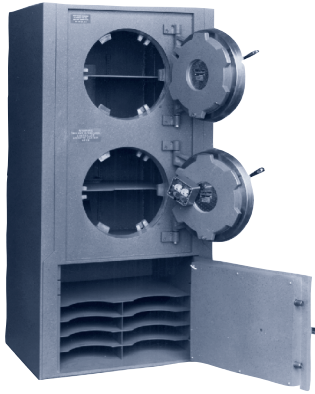


**Innovative
Security
Solutions**

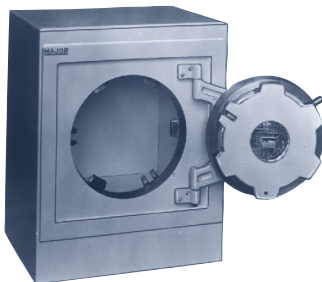
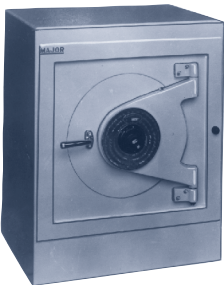
LOCKS

SECURITY
DOOR

APPROVALS	DATE	AMSEC
DOWN K Foyette	29 JUN 98	
MATL		B
FINISH		SCALE 1/10
		DD



Customers have trusted AMSEC safes for generations. With over sixty years of experience, AMSEC safes can still be found in every kind of business—serving as silent sentinels of security.



It may look like a washing machine, but it's an early AMSEC safe, circa 1952.

A History of Innovation

A tradition of quality

American Security Products (AMSEC) is the world's best-known provider of security safes and security solutions. We protect the assets of our clients throughout the world by providing a broad array of security safes and consulting services with the highest degree of quality, integrity and responsiveness. AMSEC began in the late 1940's in a small building in Paramount, California, where founder Glenn Hall set up shop with little more than a welder, a lathe, and a desire to build strong safes. Later, AMSEC pioneered the production of round door vaults, which served as the industry standard for decades. While offering excellent security, they were very expensive to manufacture.

As the demand for safes continued to grow in the 1960's, AMSEC developed new door construction that would be more cost effective. Rather than the round doors with complex machine work, square doors were cut from plates of steel. This significant design change required innovative boltwork and locking mechanisms to insure the same high level of security.

AMSEC's development of protection equipment was primarily driven by the need to find materials and techniques to withstand the expertise of the modern day burglar. To combat these techniques, in 1994 AMSEC developed safes utilizing a composite construction. These safes combine hard plate steel and high strength concrete to offer greater protection against attack by a wide variety of burglary tools. AMSEC was the first domestic company to obtain Underwriters Laboratories' coveted TL15 and TL30 Burglary rating on a high security composite safe. AMSEC continues to be the most innovative company in the burglar and fire resistant safe market.

We offer the industry's most extensive product line of UL Listed fire resistant safes, fire resistant data safes, B and C-rated safes to UL Listed TL-15, TL-30 and TL-30x6 high security burglary safes. We pride ourselves on our ability to solve the physical security challenges and develop practical solutions for our customers.

AMSEC at a glance

AMSEC is the world's leading producer of burglar resistant safes. Here's why:

Volume

We produce over **60,000 safes** each year! Whether you need one safe or a hundred, we can design and build a safe that meets your specifications.

Manufacturing

Our Fontana, California factory is **150,000 sq. ft.**, and located just ten minutes from the new Ontario International Airport. We welcome you to come and inspect our state-of-the-art manufacturing facility.

Employees

Amsec employs a force of **300** to ensure timely design, manufacturing and delivery of quality safes.

Underwriters Laboratories Ratings



We lead the industry with **nine** UL Listings for various products.

Round-the-clock Technical Support

Our tech support representatives are available to help **24**

hours a day, 365 days a year by calling our toll-free hotline.





Our volume of safes made each year is unmatched in the industry



Our distribution and delivery of safes are unparalleled. If there's a road leading to the customer, we'll get a safe there - when you need it, where you need it. We recently expanded our manufacturing facility to 150,000 sq. ft.



State-of-the-art equipment such as laser and plasma cutters allow us to save time, material, and speed production.

Quality & Durability

Craftsmanship in every AMSEC safe

The quality of an AMSEC safe starts with our design. The design of each AMSEC safe draws on over 50 years of experience of protecting the physical assets of our customers. There aren't many criminals with over 50 years of experience, so we think that gives us the advantage.

From our experience we have learned to design a safe for durability. Our engineering department spends thousands of hours each year to insure that AMSEC designs will withstand the test of time. After designs are completed they undergo the industry's most comprehensive testing program.

In addition to our extensive in house testing, AMSEC uses independent agencies such as Underwriters Laboratory to put our designs to the test. All electronic locks used on AMSEC safes have been tested to the military standard, Mil 0202-Method 106 in our own environmental test chamber. During this test the lock is subjected to high fluctuations in temperature and humidity. In the electronics industry Mil 0202 is generally regarded as the best way of predicting the reliability of electronic systems.

Each AMSEC safe is manufactured to the tightest tolerances. We maintain the highest standards of fit and finish in the industry. This attention to quality combined with our extensive product testing insures the durability of AMSEC products.

In addition to safe design and construction, AMSEC is also a leader in the development and implementation of electronic locks. We offer both third party and our proprietary control systems. These have integrated features such as time delay, distress codes, multi-user codes, audit trail, alarm system interface and many others.

Before the AMSEC name is attached to each safe, the safe must undergo a rigid 28-point inspection. We take protecting our customers' assets very seriously. That's how we got to be the biggest security safe company in the world. You have our name on it.

AMSEC electronic locks

AMSEC is a leader in electronic lock technology

Our ESLXL Series electronic locks represent leading edge technology at an unrivaled value.



AMSEC developed the industry's first retrofit Group II electronic safe lock.

AMSEC has been a leader in the industry in electronic lock technologies. Our SafeWizard and ESLAudit



electronic safe controllers are a state-of-the-art electronic products used by many nationally known retail outlets to control and audit access to their safes.



In addition to our own electronic locks, we also offer fine products by leading manufacturers such as LaGard, Kaba, and Sargent & Greenleaf.

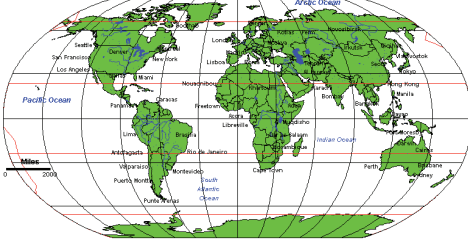
LAGARD

KABA®



SARGENT AND GREENLEAF

Worldwide Service Network



AMSEC's service reps are just a phone call away, 24 hours a day, 365 days a year. We offer a team of over 7,500 trained technicians ready to come to you.



Our fully automatic "GOFF" shot blast machine utilizes high speed blast wheels to hurl .030" tungsten shot at a velocity of 11,000 ft. per minute at the safe as it is rotated within a fully enclosed cabinet. All safes are perfectly de-scaled to provide a clean surface to enhance the final painting process.



AMSEC's experienced engineering staff is prepared to solve the most complex safe problem.

Support

Unparalleled customer service

We think the number one reason you should purchase your safe from AMSEC is our service. We have built our company on service and our commitment to offer the best service in the industry will insure that AMSEC remains the industry leader. AMSEC has installed more than 500,000 safes worldwide. We have the best service organization to support this installed base.

Our commitment doesn't end with delivery of a safe. Our corporate service center in Fontana, California is staffed with highly trained technicians. Technicians are available 24 hours a day, 365 days a year, to answer questions and help solve problems with any safe shipped anywhere in the world. With increasingly sophisticated electronic access control systems technical support is more important than ever.

Our field support team is made up of over 7,500 factory certified technicians. In most cases we can have someone at your location within hours. When the manager of a store needs assistance with a safe, we're here to help whenever, wherever with phone support or on site service.



AMSEC's highly trained customer service representatives are just a phone call away.

AMSEC's service

Millions of AMSEC products are being used every day, and they all benefit from AMSEC's 60 years of unparalleled customer service

AMSEC has the most diverse product catalog of any safe manufacturing company in the world, with products ranging from floor safes to gun safes to high-security depository safes.

AMSEC's customer service department provides support 24 hours a day, 7 day a week for each and every product we sell.

We think this sets our service department apart from all others. We listen to our customer's issues, ask the right questions, and go the extra mile to help solve any problem our customers may have.

In the words of one of our satisfied customers: "I cannot believe all that you went through to accommodate me. Most warranties aren't worth the paper they are written on, but yours is second to no one! Never in all my purchases have I been more satisfied with the level of service I received from AMSEC!"

**For emergency service
24 hours a day, 365 days a year, call our toll-free hot-line:
1-877-GOAMSEC
(462-6732)**





With our state of the art concrete dispensing system, we are able, through automatic metering devices, to ensure the consistent integral strength of our high security composite safes.



AMSEC's plasma and laser cutters can cut through 1" plate steel in seconds. This allows us to manufacture large numbers of safes to exacting standards while meeting critical delivery dates.



AMSEC utilizes a state of the art Haas VF-6 CNC vertical machining center to mill, drill, and tap safe components. The Haas VF-6 will hold tolerances up to +/- .001".

Amvault Safes

The ultimate in security

The flagship of AMSEC's high security safes is the Amvault. Rather than steel plate construction, the walls of an Amvault safe are made with layers of steel and specially formulated reinforced concrete. Its composite construction offers more resistance to cutting tools and torch attacks than a traditional steel plate safe.

Amvaults are rated as TL-15 or TL-30 by Underwriter's Laboratories. These ratings are the safe industry's standard for defining performance against tool attack. The TL-30 rating is earned when UL's trained safe crackers cannot gain access to the contents of the safe within 30 minutes using a standard

complement of safe cracking tools while attacking the door. Likewise, the TL-15 rating is reserved for safes which

withstand attack for 15 minutes. Combined with an effective alarm system, this effectively slows the progress of burglars while law enforcement personnel respond.



Amvaults also have a two-hour factory fire rating. To receive this rating, the safe endures a searing 1850°F furnace for two hours. Despite the literally scorching heat, the interior of the safe remains below 350°F. No steel plate safe on the market can pass this rigorous test.



Every Amvault safe is rated by Underwriters Laboratories for resistance to attack by burglars using standard tools for a specific amount of time.



Amvault at a glance

Amvault provides stellar protection

An unusual request for AMSEC was by the Milliken Planetarium at Chaffey College in Alta Loma, California.

For a major exhibit on lunar exploration, NASA loaned them a priceless—and irreplaceable—moon rock from the Apollo 12 mission. We provided an Amvault CF4520 to secure their precious gem. Thanks in part to the Amvault, all systems were “Go.”



Final Score: Amvault 1, Thieves 0

At an exclusive jewelry store near Chicago, employees were surprised when they discovered their Amvault had endured a daring night-time assault. According to police reports, burglars had entered the store through the roof, drilled a hole through the safe and filled it with water, in the hopes of preventing the cash from burning after they used *nitroglycerine* to blow the door. The safe was more than they bargained for. Despite an explosion which rocked buildings blocks away, the Amvault stood secure, leaving the would-be burglars up a creek.

Custom Safes

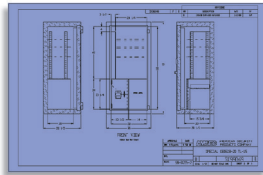
Solutions to meet your specifications

AMSEC has the widest range of standard products offered in the industry. We offer a wide selection of undercounter safes for immediate protection of currency removed from cash registers. These types of safes are recommended for any operation that requires fast money drop. They have been proven to reduce the risk of robbery.

Our wide product offerings in Depository safes help insure that we have a standard design that will meet most needs. Depository safes have anti-theft mechanisms that allow employees to put cash into the safe without gaining access to the contents of the safe. There may be one or more secured compartments inside the safe to allow for additional controls.

Any standard AMSEC safe design can be modified to meet your specific security needs. Our vast experience allows us to meet our challenges in a timely and cost-effective manner. Businesses throughout the world have relied on AMSEC to solve their unique cash management and security needs for years. That's why AMSEC is the largest manufacturer of custom security safes in the world.

We can design a safe to meet any cash management needs. WE will send you detailed drawings of the safe with a quote for construction.



Recognizable Quality



The best in the business know quality when they see it

Your company can join the ranks of leading businesses that rely on AMSEC safes to solve cash and asset management issues. Here are just a few:

- Taco Bell
- Family Dollar
- Cinemark Theaters
- Smart & Final
- Sam's Club
- Sears / K-Mart
- Hertz Rent-a-Car
- Macy's
- Panera Bread
- T-Mobile
- Rent-A-Center
- Bojangles
- Jimmy Johns
- PetSmart
- Kroger Supermarkets
- Stater Brothers Supermarkets
- Giant Eagle Supermarkets
- Giant Food Stores
- Stop & Shop Supermarkets
- Sprouts Farmers Markets
- Best Buy
- Carl's Jr
- Hardee's
- Starbucks
- Low's Home Improvement

Smart Safes

Manage your assets carefully

Sadly, in today's market, businesses are more likely to be victims of employee theft than burglary or robbery. An effective cash management system can minimize losses. We've designed safes with features that hold employees accountable and maintain security standards. Whatever your business, AMSEC will work with you to create a security solution that will effectively manage cash in your organization.

CashWizard safes are specialized to track transactions by employee and aggregate data in easy to understand reports. The user interface is intuitive and is built to work in a wide array of environments. As a security measure, users log into the safe using a personal PIN, Dallas Key or both. User permissions can be set by job function to limit risk.

In today's fast paced environment, access to data is essential. AMSEC has designed CashWizard Admin to help you pull data and manage reports remotely. Administrators may also add/edit/delete users and configure settings through CashWizard Admin, which is beneficial for managing multiple locations.

— MEET THE — CASHWIZARD — SMART SAFE FAMILY —





AMSEC
AMERICAN SECURITY

**American Security
Products Company**

11925 Pacific Ave.
Fontana, CA 92337
800.421.6142 / Fax: 951.685.9685
www.amsecusa.com

PROPRIETARY INFORMATION
UNAUTHORIZED RELEASE WITHOUT
EXPRESS WRITTEN PERMISSION OF
AMERICAN SECURITY PRODUCTS CO
IS EXPRESSLY PROHIBITED