

Electronic Locks

— Ultimate Security Solutions for Home and Business —



A History of Electronic Lock Innovation

We at AMSEC have been making safes since 1946. From a small shop in Paramount, California, we've grown to become a premier provider of security safes. We didn't become an industry leader by accident. It happened through hard work, determination and by building superior safes and innovating products based on our customers' needs.

We were the first company to recognize the need for high-reliability, high-security



electronic locks. In 1989, AMSEC introduced the KPL100, which was the first electronic lock that could be retrofitted onto standard high-security safes. Originally designed for residential use, the KPL100 found widespread appeal in the commercial market as business owners found the electronic lock's speedy opening and its inherent auto-locking feature to be an extraordinary advance in asset protection.



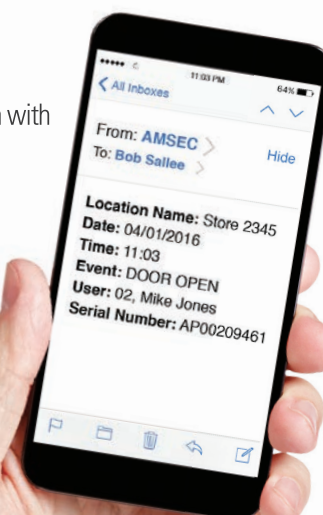
When business owners wanted a better way to manage their loss-prevention activities, we designed a more sophisticated electronic access control lock to meet their needs. We implemented innovative features, such as time delay, time lock, dual control and audit trails with multiple users with unique identities. In 1997, we released our first full-featured access control system, the AMSEC Access Manager.



In 1998, AMSEC released the ESL10. To this day, the ESL10 is still recognized as the most reliable electronic lock in the industry.

In 2016, we introduced the industry's most sophisticated access control system with complete internet connectivity, AMSEC's SafeWizard II.

We know that we are at our best when we listen to our customers. This is why AMSEC offers the most reliable and complete line of electronic locks and access-control systems available.



ESL5

Replaces most mechanical combination locks

- Easy installation and operation
- Each key individually backlit
- Factory Reset Combination for resolving lost combinations without requiring expensive service calls
- Electronics are encapsulated within the lock and are sealed to prevent possible moisture-related failures
- Cable fits through a 1/2" spindle hole without cutting and re-crimping connector
- Beep and flash from every keystroke gives maximum feedback to the user
- Lock can be programmed to silence the beep in stealth mode
- 15-Minute Penalty Lockout after four incorrect entries protects against manipulation attempts
- Swingbolt reversible lock design for right- or left-handed installation
- Lock "auto-locks" when boltwork is thrown to prevent safes from being left open
- One 9-volt battery can be easily replaced in the keypad housing
- U.L. Type 1 listed

Color Options

- Black Nickel
- Black Rubberized
- Chrome



Black Rubberized



ESL10XL

Replaces most mechanical combination locks

- Easy installation and operation
- Factory Reset Combination for resolving lost combinations without requiring expensive service calls
- Electronics are encapsulated within the lock and are sealed to prevent possible moisture related failures
- Cable fits through a 1/2" spindle hole without cutting and re-crimping connector
- Beep and flash from every keystroke gives maximum feedback to the user
- 15-Minute Penalty Lockout after four incorrect entries protects against manipulation attempts
- Patented dead-latched lock design with an internal relock device for maximum security
- Lock "auto-locks" when boltwork is thrown to prevent safes from being left open
- Slam Bolt version for locker applications
- U.L. Type 1 listed

Color Options

- Black
- Black Nickel
- Brass
- Chrome



Brass

ESL20XL

All of the features of the ESL10XL plus additional features for retailers

- Time Delay Mode: Delays can be set from 1 to 99 minutes
- Multiple User Mode: When enabled, one master code and eight user codes are available with full supervisory control and code management
- Dual Control Mode: The lock can be programmed to require two combinations to open for added security
- Armored Car Override: When enabled, allows an armored car service to bypass Time Delay
- U.L. Type 1 listed

OPTIONAL EXPANSION MODULE FEATURES

- Duress (Silent Signal) Alarm Output. Provides relay output for alarm system connection
- External connection for A/C power

Color Options

- Black



Black



ESLAudit II

Manage safe access with its integrated USB Port

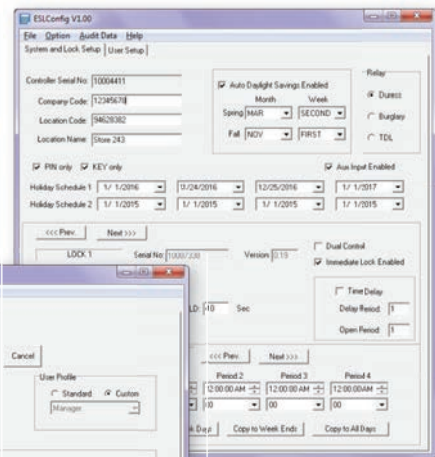
- SECURITY
- All components communicate through an encrypted network
- Large high-contrast LCD display
- Supports dual control and armored car pickups
- Supports time delay as a deterrent to robberies
- Supports time lock restricted access to defined operating hours
- 5,000-record audit trail
- Supports up to 40 users, each of whom can have unique privileges
- PIN code and/or AMSEC e-Key for user authentication
- Optional door sensor detects if door is left open
- Backup database secured inside of safe

FLEXIBILITY

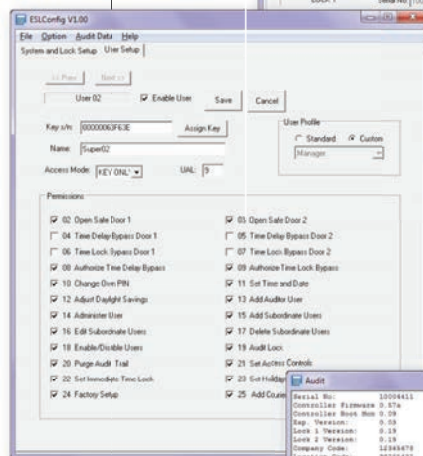
- Retrofits most mechanical or electronic locks
- Controls up to 4 doors
- Safe doors can be configured in an inner/outer door configuration
- 9-volt battery and optional A/C power
- Optional remote time delay indicator
- Optional alarm interface
- Update firmware via USB port
- Remote factory administration
- Three language options: English, French, Spanish

POWERFUL PC APPLICATION

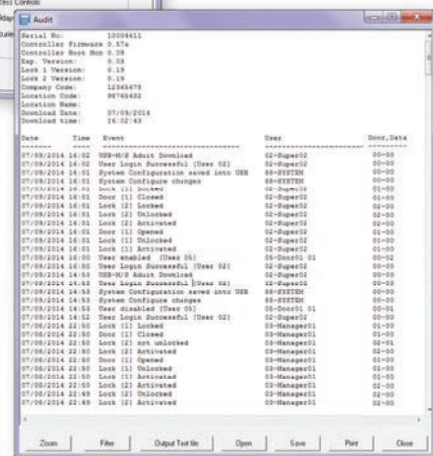
- Manage users
- View and store audit trails
- Manage system configuration
- Manage door settings



System Configuration



User Management

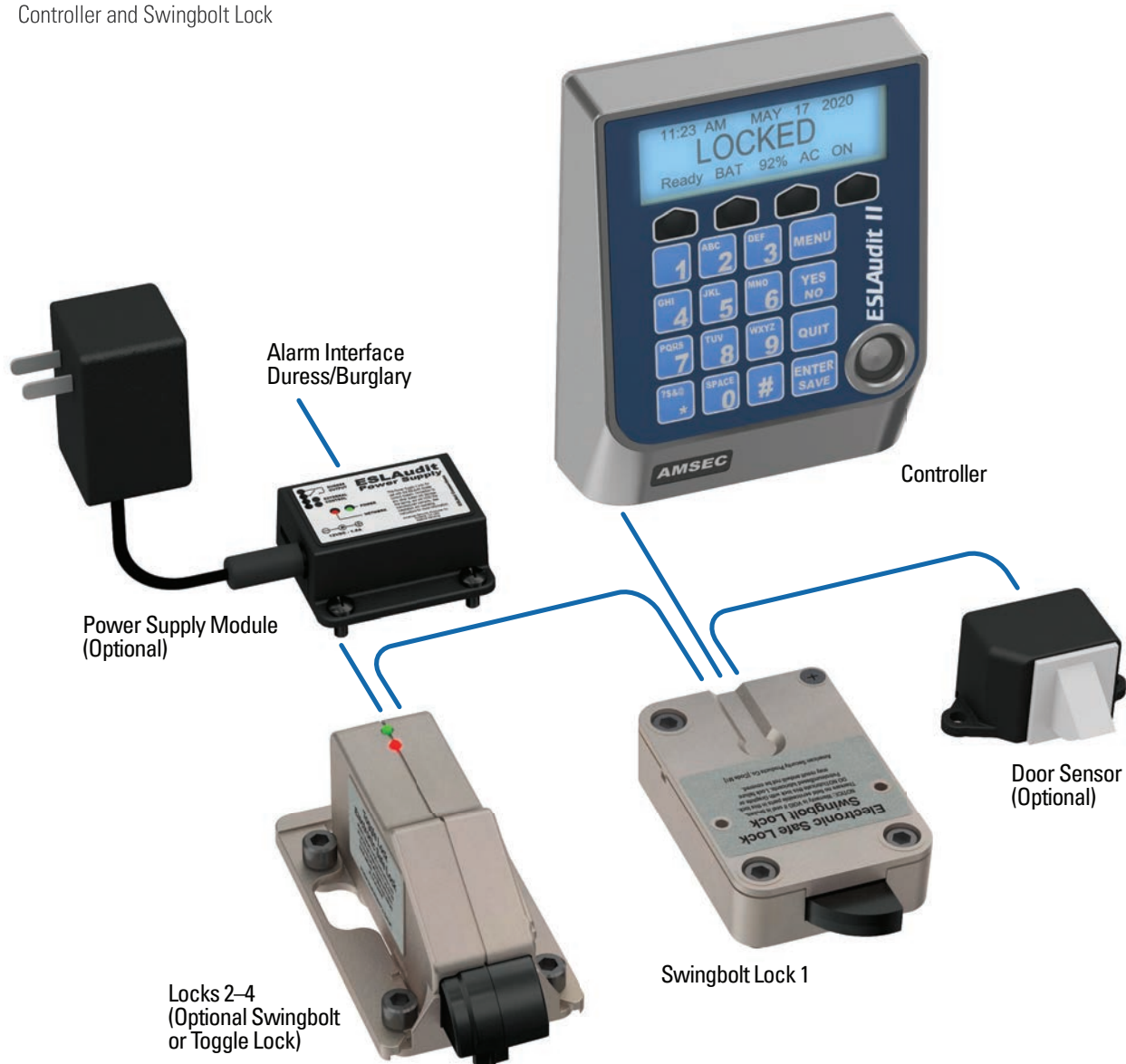


Audit Trail



Basic ESLAudit II Kit

Controller and Swingbolt Lock



SafeWizard II

The most flexible and powerful safe access control system available

SECURITY

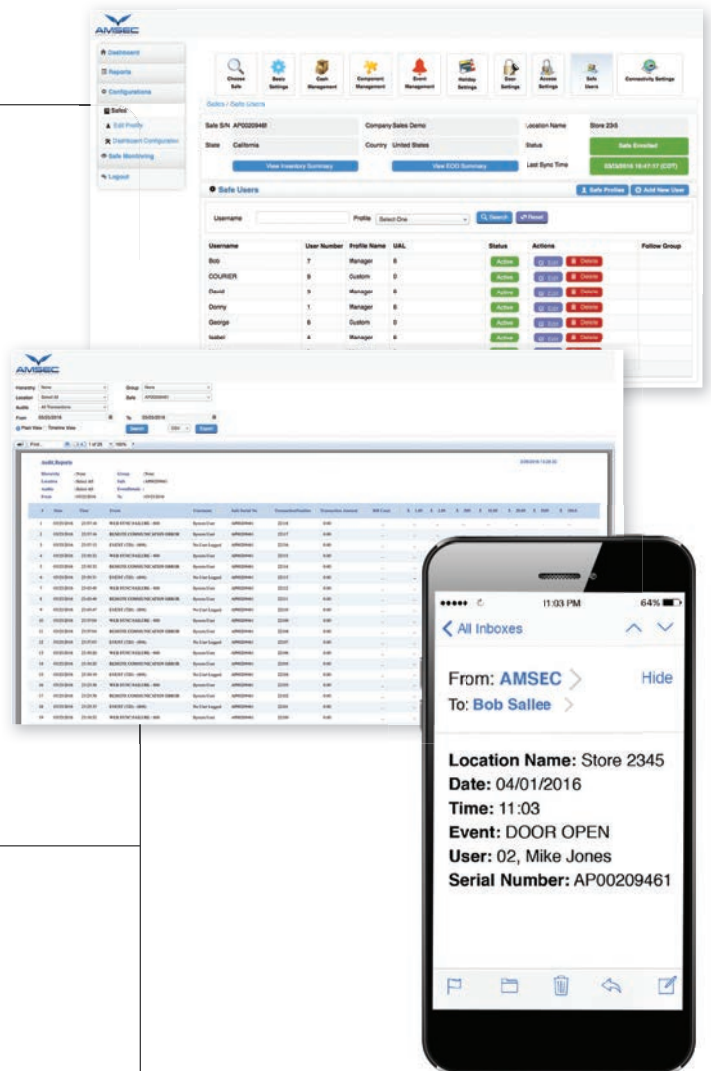
- All components communicate through an encrypted network
- Large high-contrast LCD display
- Supports dual control and armored car pickups
- Supports time delay as a deterrent to robberies
- Supports time lock restricted access to defined operating hours
- 120,000-record audit trail
- Supports up to 500 users, each of whom can have unique privileges
- PIN code and/or AMSEC e-Key for user authentication
- Door and bolt sensors detect if a door has been left open
- Battery backup for 8 hours of power-out operation
- Backup database secured inside of safe

FLEXIBILITY

- Network access via Ethernet or Wi-Fi connection
- Local firmware upgrades via USB
- Supports up to 12 locks and one deposit lock
- Multiple lock designs to support access control of safe doors, lockers and drawers
- Each lock is individually configured for all access control parameters and user access
- Alarm interface
- Remote factory administration
- Four language options: English, French, German, Spanish

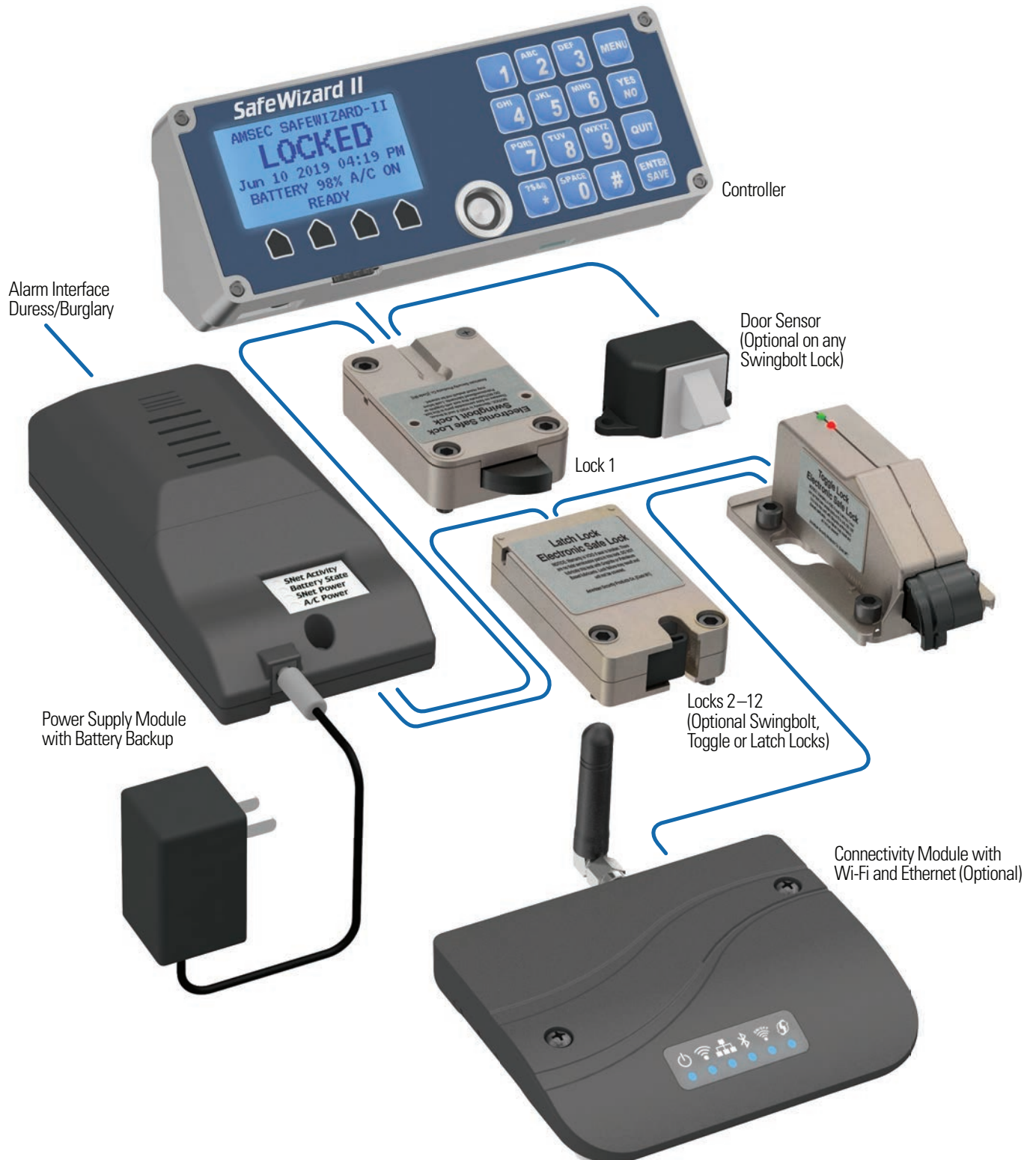
REMOTE MANAGEMENT

- Manage system configuration and users through the cloud
- Remote firmware upgrades
- Sends alerts via text message or e-mail
- Safes can be managed individually, as a group or for the whole enterprise
- Flexible reporting



Basic SafeWizard II Kit

Controller, Power Supply Module with Battery Backup and Swingbolt Lock



Lock Types – ES LAudit II or SafeWizard II

Retrofits most mechanical or electronic locks

SWINGBOLT LOCK

- Standard footprint, replaces any mechanical or electronic lock
- Reversible to serve left- or right-handed boltwork
- Internal relocker safely disables lock in case of frontal attack
- Internal bolt sensor provides locked status feedback

TOGGLE LOCK

- Direct locking for lockers without boltwork
- Much stronger than slam-adapted standard lock designs
- Adjustable mount to adapt to variations in safe manufacturing
- Internal bolt sensor provides locked status feedback

LATCH LOCK (SAFEWIZARD II ONLY)

- Ideal for sliding drawers, compact lockers and deposit mechanisms
- Compact design accommodates very small space applications
- Body based installation eliminates cables connected to moving components
- Internal bolt sensor provides locked status feedback



Swingbolt Lock



Toggle Lock



Latch Lock



Swingbolt Lock



Toggle Lock



Latch Lock

AMSEC Lock Features

| | ESL5 | ESL10XL | ESL20XL | ESLAudit II | SafeWizard II |
|--------------------------------|---|---|---|---|---|
| |  |  |  |  |  |
| Display | n/a | n/a | n/a | 4 lines | 8 lines |
| Maximum Number of Locks | 1 | 1 | 1 | 4 | 12 |
| Maximum Number of Users | 1 | 1 | 10 | 40 | 500 |
| Time Delay | No | No | Yes | Yes | Yes |
| Time Lock | No | No | No | Yes | Yes |
| Dual Control | No | No | Yes | Yes | Yes |
| Duress/Burglary Alarm | No | No | Yes* | Yes | Yes |
| Audit Trail | No | No | No | 5,000 | 120,000 |
| Audit Method | No | No | No | USB | USB, Remote |
| Internet Connectivity | No | No | No | No | Ethernet/Wi-Fi |
| Cloud Reporting | No | No | No | No | Yes |
| Smart Phone Apps | No | No | No | No | Yes |
| Bolt Sensor/Tamper | No | No | No | Yes | Yes |
| Door Sensor | No | No | No | Yes | Yes |
| Validation - Key Type | PIN | PIN | PIN | PIN/AMSEC e-Key | PIN/AMSEC e-Key |
| Real Time Clock | No | No | No | Yes | Yes |
| Backup Battery | No | No | No | No | Yes |
| Power Source | 9 Volt | 9 Volt | 9 Volt/AC* | 9 Volt/AC | AC/Battery/9 Volt |
| Software Update | No | No | No | USB | USB or Remote |

*Optional